



Box Latch™ Products

Are Revolutionizing the Worldwide Use & Reuse of Boxes & Cartons



As they Save Time, Money & The Environment



Breaking News

See Our Case Study in May Issue of *Packaging World*

packworld.com/home/article/21121711/making-corrugated-boxes-reusable

Copy & Paste links into your browser if they do not work.



Presentation Index

1. **Storage space & operational efficiencies**
2. **Tape pollution, enhance Lean & Green principles**
3. **Manufacturing, assembly systems & warehouse management**
4. **Saving, boxes, floor space, tape & fork lift driver time**
5. **Partitioned boxes save space, freight, damaged parts & dunnage**
6. **Tamper evident security seals**
7. **Worldwide Distributors**



SECTION 1

STORAGE SPACE & OPERATIONAL EFFICIENCIES

DO YOUR FACILITIES LOOK LIKE THESE?

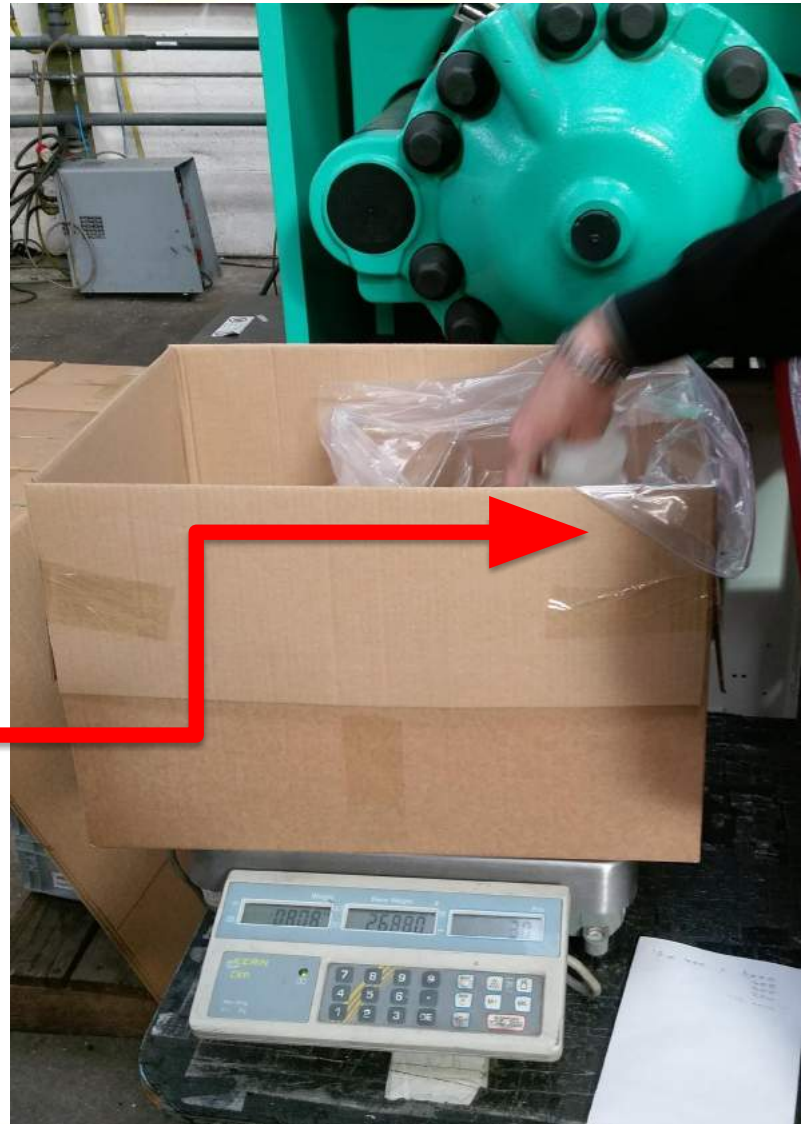


Examples From Anywhere in the World



**Malaysia – Boxes in Need of Box LatchesTM
& Corner Clips For Safety, Stacking & Reuse**

**United Kingdom –
An Injection Molding
Company's Box In Need
of 4 Corner Clip &
Stacks to Eliminate Tape
& Hold Bag in Place**





SECTION 1

BOX LATCHES[™] AROUND THE WORLD:

- Clean up facilities
- Reduce need for tape
- Minimize tape guns & time to refill them
- Eliminate human injuries from knives
- Avoid damage to contents from box cutters
- Enhance reuse of boxes undamaged by tape



**UK – Customer That Bought Hundreds of Units to Solve
Their Problem With Corner Clips and Box Latches[™]**



**USA - Northwest Metalcraft's Creative
Way of Transporting Packing Slips
With Open Boxes**



**USA – Box Latches™
As Tag Holders
No Tape Needed**

www.vfc.com



Belgium – VFC Replaces Bands with Corner Clips For Speed & Safety

Box Latch™ Products



USA - Imperial Plastics - Not Only Make Our Products - They Use Them



**USA - Belden Plastics
Single Wall Boxes
Held Open & In Place
On Pallet for
Robotic Filling**



**USA - Mercury Marine Holding Flaps
Out of Way to Improve Access to Parts**



Switzerland - Belimo Vacuum Placement of Boxes Closed With 1 Box Latch[™] on Pallets

Copy & Paste to Browser
To See How This Works
youtu.be/1Bw-p3fs_wM



**USA – DIY
Vertical Storage
Bins - No
Shelving Needed
in Box Latch[™]
Fulfillment
Center**



SECTION 2

BOX LATCHES[™] TO REDUCE TAPE POLLUTION & ENHANCE LEAN & GREEN PRINCIPLES IN DISTRIBUTION CENTERS



Belgium - VFC Preconstructs Boxes During Slow Times

**Click to See How VFC Uses Box
Latches™ with Anchors in their
Distribution Center**

youtu.be/VV2ZDSIUvM4



**Belgium -VFC Inventory
on Open Shelves
Waiting to Be Picked**

**Czech Republic - VFC Caged
Inventory in Pick Locations**





Belgium - VFC 3,000 Corner Clips Used in Pick & Pack Fulfillment



**Safety &
Conveyor
Flow
Problem
Solved**

Belgium – VFC - Open Boxes Ready to Be Picked



Belgium – VFC
Cartons Closed Using 20,500
Box Latches™ With 41,000
Anchors

Tape Induced Line Shutdowns
Gone – Saves VF
\$ Tens of Thousands in
Labor/Year

boxlatch.com/wp-content/uploads/2020/03/NVC-VF-Case-Study-Published-in-the-Netherlands.pdf



Old Way

**Belgium -
VFC's
Carts on
Wheels
Easy to
Transport
Latches
From End
of Use
Locations
to Starting
Points**



New Way



**Netherlands - Michael
Kors - Corner Clip
on Open Boxes
Transported with
Trolleys**

SECTION 3

EFFICIENCIES IN MANUFACTURING, ASSEMBLY SYSTEMS & WAREHOUSE MANAGEMENT



**USA -TYRI Inserts Parts in
Boxes Using One vs. Two CCs
to Hold All Flaps Open**





**USA - TYRI – Green Latches
Placed on All Opened Boxes to
Signify “Use Me First”**



**USA - TYRI – Storing on End
Reduces Storage Space Needed**



**USA -
Imperial Plastics
Uses Color
Coding to Provide
Visual Solutions
Multiple
Warehouse
Management
Situations**

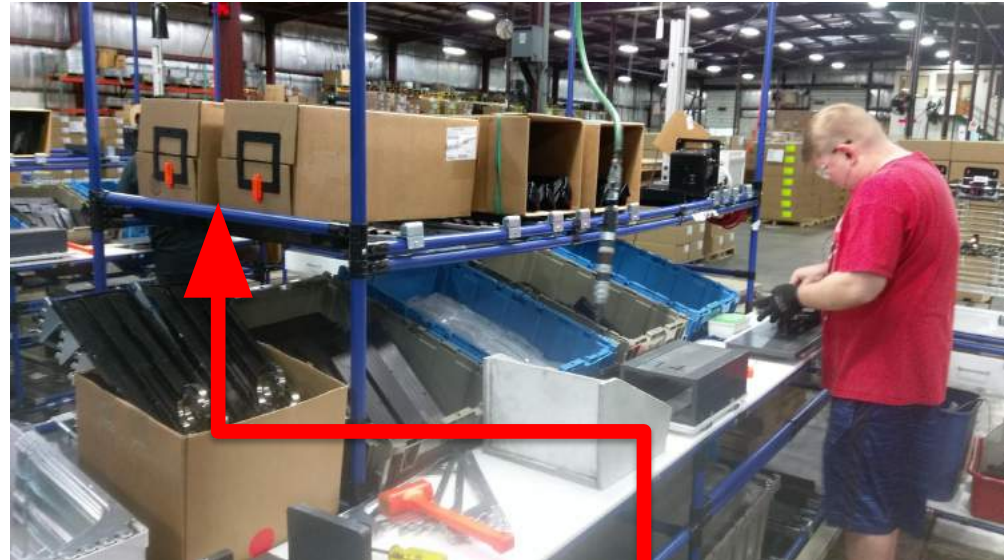
Japan -Instructions for QA and/or Returns of Goods Managed Visually



Green - Good to Go

**Yellow - Needs
Further Action**

Red - Reject



USA - Wisconsin Plastics, Inc – Long Part Being Placed in Side-Opening Boxes Closed Using Box Latch™ with One Anchor on Each Side

SECTION 4

**SAVING BOXES, FLOOR SPACE,
TAPE & FORK LIFT DRIVER TIME**



**USA - Wisconsin Plastics – 325
Collapsed Boxes in One Gaylord
Are Reused 30 Times Saving \$10k/yr**

Click to See This Case Example
youtu.be/FkjqiLX39yg



**Replacing 25 Pallets With Expensive, Empty
Plastic Totes Occupying Floor
Space Worth \$20/sq ft**



**USA - Boxes
Rapidly
Destroyed by
Folded Flaps**



**Box Latches™
With or Without
Anchors Preserve
Boxes For Reuse**



**Stack “Em”
Open or
Stack “Em”
Closed
Without
Tape**



SECTION 5

PARTITIONED BOXES SAVE SPACE, FREIGHT, DAMAGED PARTS & DUNNAGE

- **Start With High Quality Boxes**
- **Close With Box Latches[™]**
- **Reuse Them Dozens of Times**



boxlatch.com

INNOVATIONS Outside The Box



- Reusing These \$30+ Boxes 20 Times Saves \$600/Box
- 100 Boxes = \$60,000
- 1,000 Boxes - \$600,000

boxlatch.com/wp-content/uploads/2019/09/NW-Metalcraft-Case-Study-Short-Version.pdf



**While Reducing Massive
Packaging Waste**



**USA - Belimo - This Wooden Crate System Was Bulky,
Heavy & Freight Expensive Causing Bulk Parts To Be Damaged**

boxlatch.com/belimo-case-study



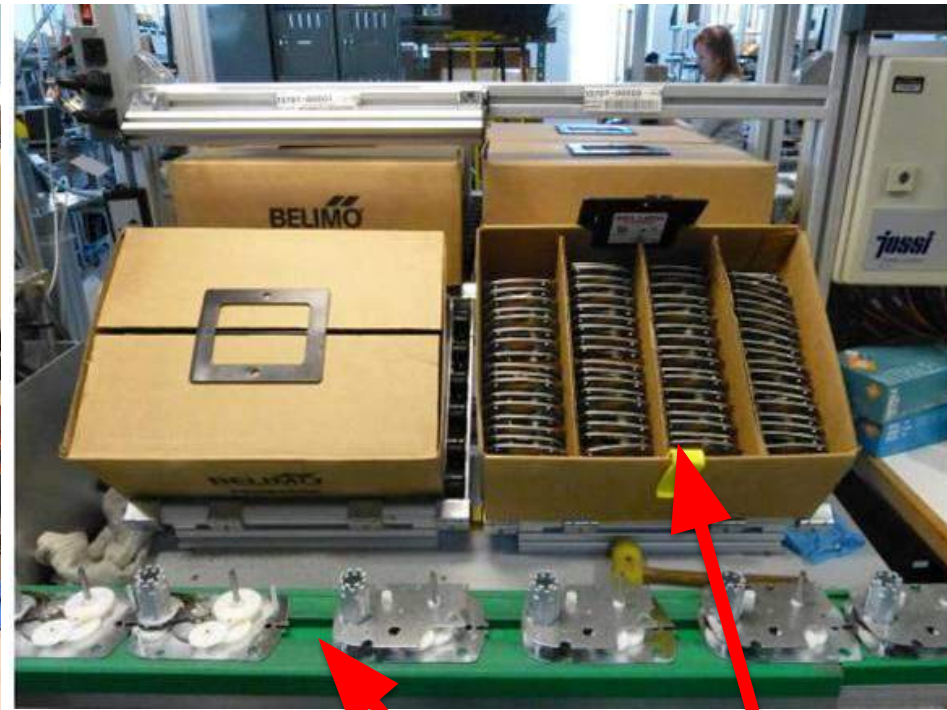
USA – Belimo Replaced Crates with Partitioned Boxes Saving 100s of Thousands of Dollars



Product Assembly Example



USA - Belimo - Before – What a Mess



After – Clean & Neat
Speeding Assembly Time



Click P2Packaging.com to See
Custom Partitions & Boxes Built by our Associate



**Closing, Transporting
& Returning Boxes
Closed with Box
Latches™ Saves Big
Money/Reduces
Massive Packaging
Waste**

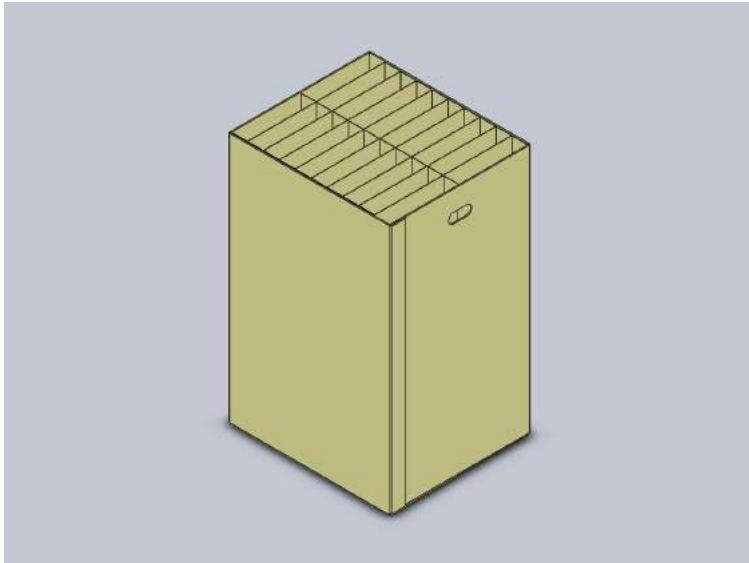


P2Packaging Synergies with Box Latches™

- **Increased container density**
 - Maximize usable ID space – no air cells = lower packaging costs
 - Reduced freight expense
- **Robust enough for multiple uses**
- **Easy to assemble & use – no installation of partitions needed**
- **Not limited to stock size cartons**
 - All orders designed to fit customer's needs
- **No wasted head space in the box = more layers per pallet**
- **Boxes collapse to become completely flat between uses saving warehouse space and freight costs**
- **Made from a wide variety of materials including E-flute corrugated & chipboard**
- **Inventory a single part # that includes box & partition**
- **Components are die-cut, allowing for finger notches, hand holes other unique features**



A Custom Carton Built for a P2Packaging Customer



- Partition #: 221768
- Parts Per Cell: 1
- Total Cells: 20
- Pack Density: 20 parts/pack
- HSC OD: 24x22x37.25
- Old Truck Density: 2,080 parts/truck
- P2 Truck Density: 4,160 parts/truck
- Cost/Kit: \$19.12

**Custom-Built Vehicle Rear
Upper Sun Shade
Fits Perfectly in Partitioned,
Reusable Box**





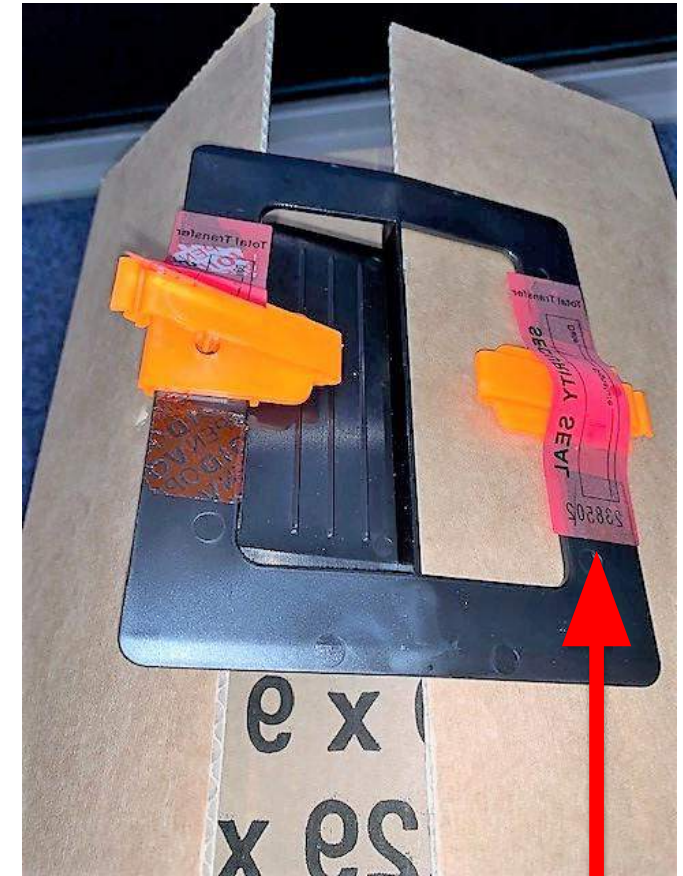
One Customer's Savings Generated By P2Packaging's Innovative Packaging

| | ANNUAL MATERIAL COST | | | | ANNUAL FREIGHT |
|-------------------------------|----------------------|---------------|------------------|------------------|----------------|
| | SINGLE USE | P2 REUSE ONCE | P2 REUSE 3 TIMES | P2 REUSE 6 TIMES | |
| TRADITIONAL PARTITION DESIGNS | \$ 1,744,668 | | | | \$ 3,113,681 |
| P2 PACKAGING DESIGNS | \$ 2,106,351 | \$ 1,213,244 | \$ 781,626 | \$ 596,647 | \$ 2,259,013 |
| | \$ (361,683) | \$ 531,424 | \$ 963,042 | \$ 1,148,021 | \$ 854,668 |
| TOTAL PROGRAM SAVINGS | \$ 492,985 | \$ 1,386,092 | \$ 1,817,710 | \$ 2,002,689 | |

* Savings include the cost of returning the partitions to Mexico.

SECTION 6

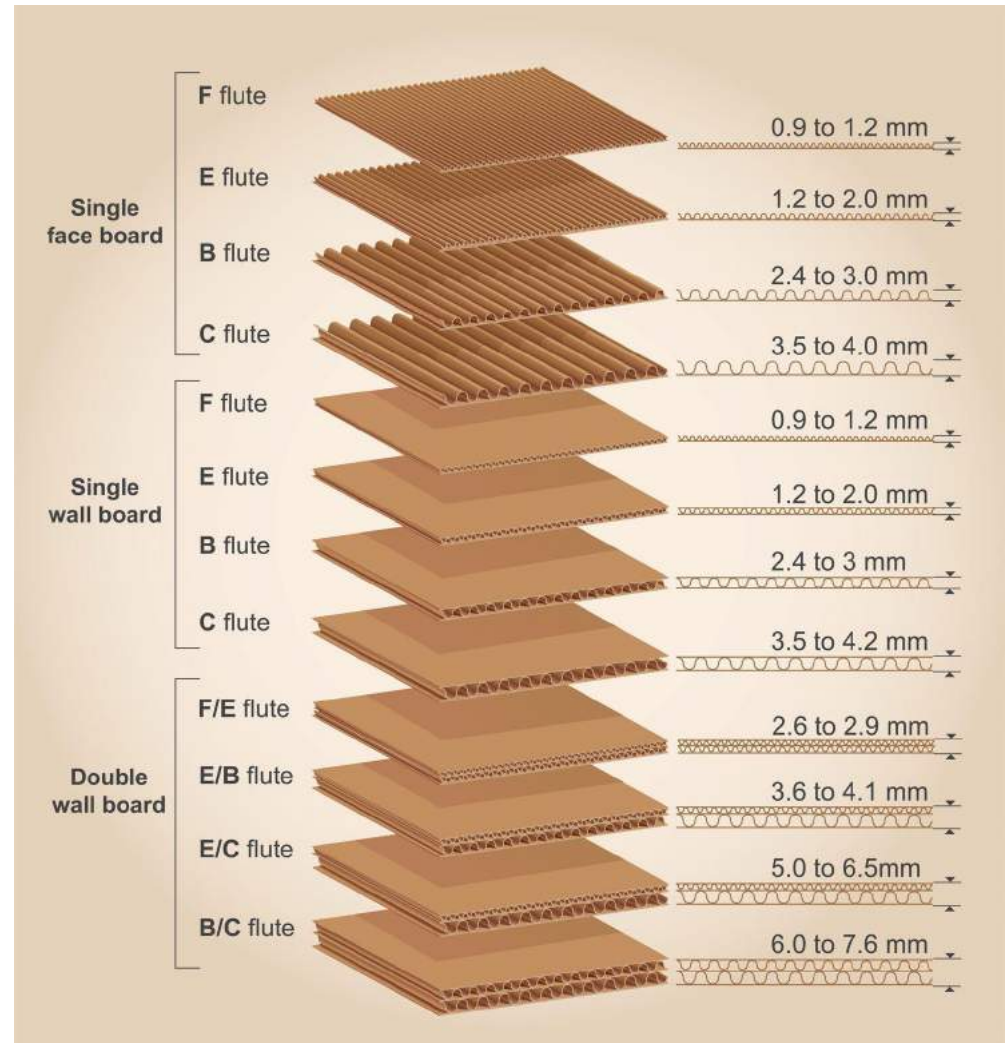
TAMPER EVIDENT SECURITY SEALS



Need Tamper Evidence? – Ask About Security Seals

What Flute Sizes and Wall Thicknesses Look Like

Without Triple Wall





Examples of Uses

BL Medium Single Wall on "C Flute

BL Large on Double Wall

BL Tall Wall on Triple Wall

Our Family of Products Work On Multiple Wall Thicknesses

7. Contact One of Our Worldwide Distributors

- United Kingdom | item-products.co.uk
- Japan | thewind.co.jp
- SouthKorea | 이패키징 / +82 31.472.5918
- Malaysia | flowpac.com.my
- Australia | phil@boxlatch.com
- Germany | wi-sales.com
- Germany | willyheckmann.com
- New Zealand | primepac.co.nz



**Thank You For Taking Time to
Learn About Our Box Latch™ Products**